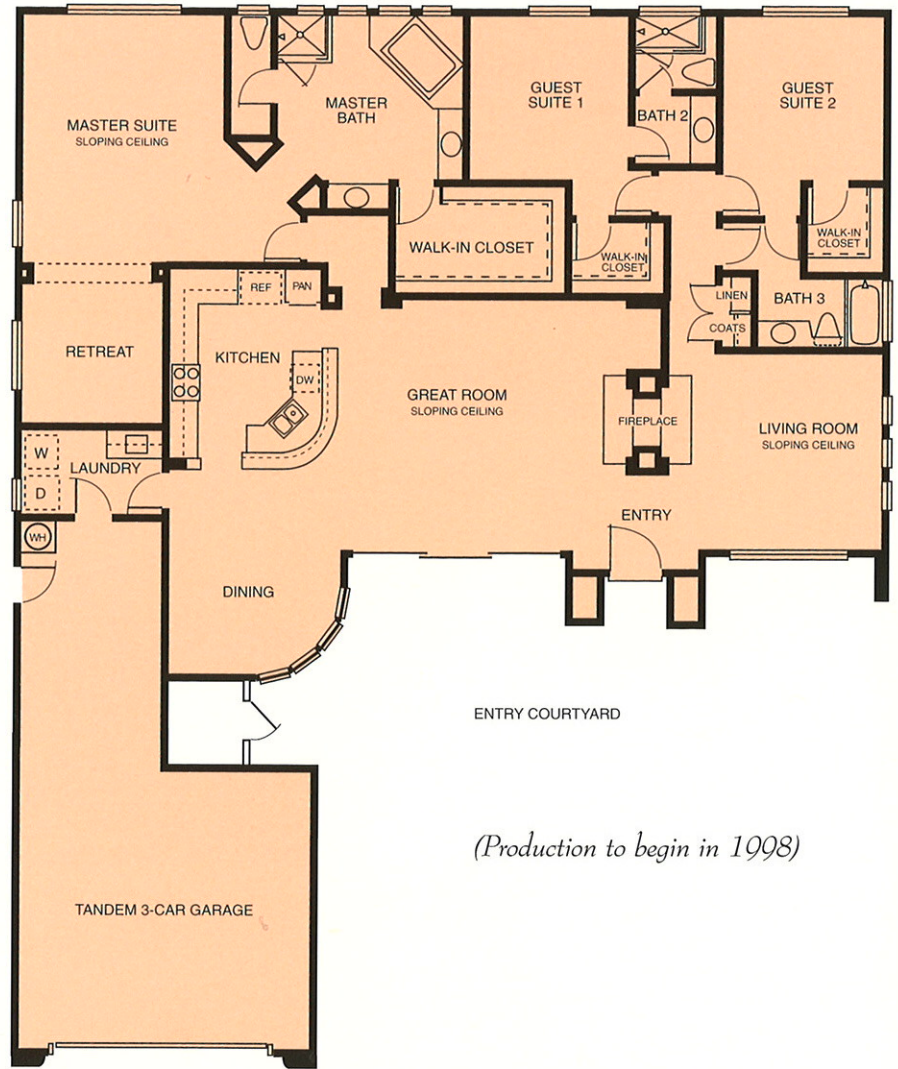


THE
VALENCIA

Residence Four
Three Bedrooms with
Master Retreat, Three Baths
2,500 Square Feet

The lovely courtyard entrance leads to a formal living room and a large Great Room with a see-through fireplace dividing the rooms. The gracious kitchen opens to the Great Room as well as the dining area that features a dramatic curved window wall. A private master suite features a luxurious bath retreat and spacious walk-in wardrobe closet. The two separate guest suites each have their own private bath.



(Production to begin in 1998)



RESIDENCE 4R